

Respiratory High-flow Therapy Device H-80 Series

Quick Operation Manual

1. Button Functions



Mute Button

Press this button to mute the alert



Knob

Start treatment and adjust device settings



Back Button

Return to the previous operation

2. Setting up the Device

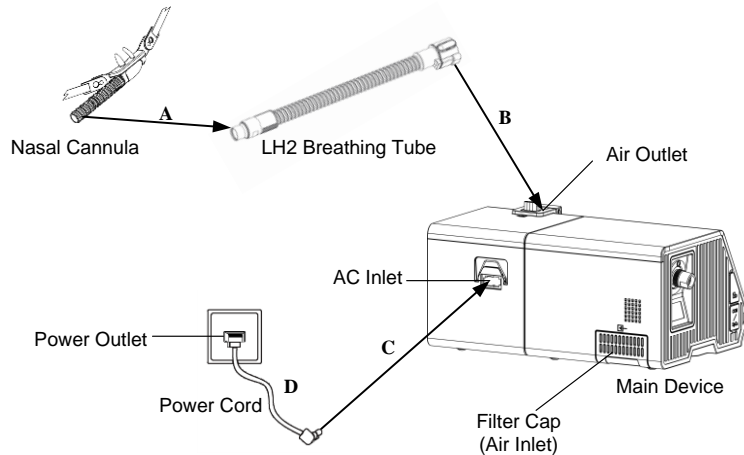





Fig. 2-1

Connect the accessories and power cord to the device, as shown in the Fig. 2-1:

- A. Connect the patient end of the LH2 Heated Breathing Tube to the assembled nasal cannula.
- B. Connect the machine end of the LH2 Heated Breathing Tube to the air outlet of the device firmly.
- C. Connect the power cord to the AC inlet of the main device.
- D. Plug the other end of power cord to the power outlet.

3. Adjusting Device Settings

Connect the power cord and LH2 Heated Breathing Tube properly, the screen displays the Main Interface shown in the Fig. 3-1. Turn **the Knob**  to switch among interfaces and options. Press **the Knob**  to conduct parameters setting and confirm options, as shown in the Fig. 3-2. After finishing adjusting device settings, return to the Main Interface and press **the Knob**  to start treatment.

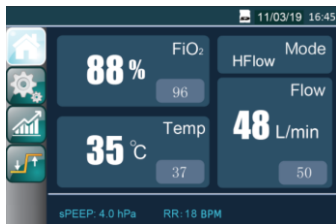


Fig. 3-1

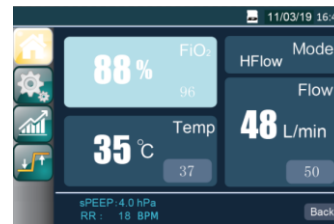


Fig. 3-2

4. Important Note

Before using the device, read all the information in the user manual and memorize the information related to correct operation.